

ROUND THE BEND

"BRIDGING THE GAP BETWEEN ENGINEERING AND ECOLOGY"

Spring 2010
Volume 3, Issue 2

WALLACE & PANCHER, INC. AWARDED LANDSCAPE PROJECT for FLIGHT 93 NATIONAL MEMORIAL

September 11, 2001 was one of the darkest days in our nation's recent history. The United States experienced the worst incident of terrorism in its history: the coordinated hijacking of four commercial airliners. Shortly after terrorists flew airplanes into the Twin Towers of the World Trade Center and into the Pentagon, the forty passengers and crew members on United Airlines Flight 93 fought a battle in the sky over Pennsylvania. These forty heroes won their battle against terrorists and thwarted a planned attack on our nation's capital, saving countless numbers of lives, but sacrificed their own in a field just east of Pittsburgh, in Somerset County, Pennsylvania.

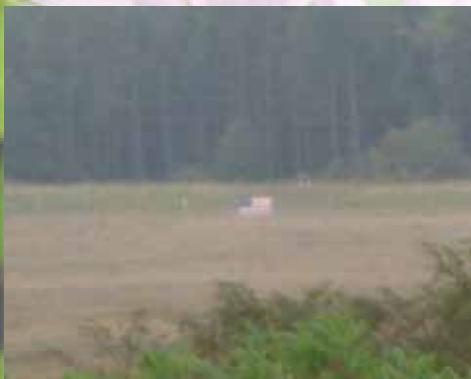
Outside Shanksville, Pennsylvania on November 7, 2009, U.S. Interior Secretary Ken Salazar marked the ground breaking and start of construction for the permanent Flight 93 National Memorial. The national memorial pays tribute to the passengers and crew of United Flight 93, with a mission to protect and honor the heroes on the Sacred Ground where the plane hit the earth.

Wallace and Pancher Construction, Inc. (WPI), was recently awarded the landscaping contract by the Arrow/Kinsley Joint Venture for the Flight 93 National Memorial Project. The memorial park sits on 2,231 acres in Somerset County, approximately 80 miles outside of Pittsburgh.

WPI will provide a variety of landscaping services, including meadow restoration, wetland mitigation, and commercial landscaping at the visitor area. The centerpiece of the memorial landscape is the landform known as the Bowl. The memorial design frames the Bowl, as a Field of Honor, with trees circling the entire area. Visitors will encounter multiple landscape experiences as they drive around the Bowl on their way to its focus, the Sacred Ground, set against a backdrop of hemlock trees that absorbed the impact of the crash. Phase one of the Flight 93 National Memorial is under construction and on schedule to be dedicated on September 11, 2011.

Incorporated in 2001, just before September 11th, WPI has experienced tremendous growth during one of the worst economic climates in our nation's

history. WPI brings that commitment, passion, and customer service to every client. They have provided the same honor, commitment, diligence, and quality minded installation services on numerous commercial and residential projects as they will for the Flight 93 National Memorial project.



Flight 93 Crash Site



Flight 93 Present Crash Site Memorial



inside this issue

FLIGHT 93 NATIONAL MEMORIAL:

WPI awarded Landscape Project

WPI INVESTS IN THEIR EMPLOYEES:

Cathy Tulley appointed to Advisory Committee

WPI EMPLOYEE SPOTLIGHT:

Ron Leksell
Supervisor, Roofing & Sheet Metal

NOTE FROM THE OWNERS:

needs re-written from Dan

FRESH FACES:

Joe Hirschmann
Brad Burford
Kim Vaughn
Chris Wagner
Tom Reichart
Gary Leksell
Dan Urey
Steve Mittal

Send your newsletter suggestions to:

marketing@wallacepancher.com

WPI FUNNY:





A NOTE FROM THE OWNERS

Dan to Re-Write...

I'm finally getting a chance to sit down and collect my thoughts about today's events. Brian and I attended a groundbreaking ceremony this morning for the Technology Center of Excellence next door to our Hermitage Office. about 300 people attended and speeches were made. Gary Gulla (Hermitage Assistant City Manager) was the MC and announced that Wallace & Pancher, Inc. was hosting an Open House after the speeches and groundbreaking. He went on to say that our company is a true success story and talked about our growth over the last few years. He also mentioned that we were recently awarded the Landscaping Contract for the Flight 93 National Memorial Project in Shankesville, PA. At that point everyone started applauding. It was pretty cool.

The key note speaker was US Assistant Secretary of Commerce John Fernandez, who was appointed by President Obama. After the ceremony, Gary Gulla found me and said Assistant Secretary Fernandez would come to our office for 10 minutes. A few minutes later Fernandez walked toward me without knowing who I was. I introduced myself and we talked while we walked, heading toward our office. Until his entourage basically chased us down and the state police came to us, as he wasn't allowed to walk to our office.

So, he motioned me into the police cruiser with his people and I got them laughing about being in the cruiser.

They came to the office and we had a great discussion about all that we do and all of you. We have a great staff of professionals and all that Brian and I are able to generate is because of each and every one of you. Anyways, Assistant Secretary Fernandez stayed for more than 30 minutes touring our office, talking to employees and getting photos taken. It was funny, while Brian and I were talking to him in the conference room, his people basically blocked the door for privacy. Only the photographer was allowed in.

After he left, Senator Robbins showed up and we did the same thing with him. other dignitaries and business leaders came over and had a real nice visit.

Thank you Kim, Beth and all who helped plan and prepare for the event. And especially thank you to all who baked cookies and pastries, all were very impressed.

Dan Brian



John Fernandez, U.S. assistant secretary for commerce and development, talking to Brian Pancher. More photos on page 4.

fresh
faces

Wallace & Pancher Construction, Inc.



GARY LEKSELL



STEVE MITTAL



TOM REICHART



DAN UREY

WPI Employee Spotlight: *Ron Leksell, Supervisor Roofing & Sheet Metal*



Mr. Ron Leksell recently joined Wallace & Pancher Construction, Inc., as Superintendent of Roofing and Sheet Metal. In his new position, Mr. Leksell is responsible for strategic planning, budgeting, project management, vendor relations, design, and the complete management of the Roofing and Sheet Metal Division of WPI Construction.

Mr. Leksell brings over 30 years of expertise

in roofing and sheet metal industry. He has owned and operated his own company where he provided roofing services as well as steel building construction in the residential, commercial and industrial sector for various Fortune 500 companies, national retailers and manufacturers.

“Ron’s depth and extent of knowledge of the commercial roofing and sheet metal industry is an essential element to the continued growth and success of our firm. We are happy to have him as a part of the WPI family,” remarked Dan Wallace, P.E. “Ron is a welcome addition to our team of professionals and has already initiated

positive changes to WPI Construction,” remarked Brian Pancher.

A successful roofer and sheet metal installer by trade, Mr. Leksell is VERSICO Roofing Systems Certified. Mr. Leksell has installed, maintained and repaired various types of roofing systems such as TPO, EPDM, BUR, Modified, Metal, Copper, Slate, Terra-cotta and Shingles. His teams of professional installers are Metal Building Components, Inc., (MBCI), a leading manufacturer of standing seam roofing systems, metal roof and wall systems, authorized installers.

Cathy Tulley Appointed to Pittsburgh Public School District's Career and Technical Education Bio-Technology Occupational Advisory Committee



On March 5, 2010, Cathy Tulley, GIS Analyst for Wallace and Pancher, Inc (WPI) was appointed to the Pittsburgh Public School (PPS) District's Career and

Technical Education (CTE) Bio-Technology Occupational Advisory Committee. Ms. Tulley's responsibilities as a GIS Analyst for WPI include: assisting in the design, development, creation, and management of geodatabases, mapping, and other related projects, as well as creating, editing, and organizing incoming spatial data. Her expertise in the industry, as well as her concern for the educational outcome of PPS students, made her an excellent addition to the advisory committee.

Jeff Mihalik, GIS Manager for WPI, is providing technical assistance to the school to assure that they have the most up-to-date and appropriate software and GIS educational materials.

The main purpose of an occupational advisory committee is to strengthen the career and

technical educational program by making recommendations for program improvement and providing technical assistance to assure the most up-to-date curriculum content and appropriate applications of technology. Ms. Tulley's objectives will be to:

- Make recommendations to strengthen and expand the curriculum and provide assistance in implementing these recommendations
- Provide recommendations to update, modify, expand, and improve the quality of the occupational program
- Assist in identifying needs, determining priorities and reviewing and evaluating curriculum
- Articulate long-term goals and objectives of the occupational programs to parents, employers, and the community

Participation in these tasks will assist not only strengthening the CTE programs but also the relationship with businesses, industry, and the broader workforce community.

Congratulations Cathy from all of WPI!

Jeff Mihalik, GIS Manager, Presented at 18th Annual Pennsylvania GIS Conference May 11, 2010

Wallace & Pancher, Inc. (WPI) has developed an innovative approach to integrate a mobile work force with environmental GIS data collection and management. WPI was awarded a service contract from two major long-wall mining operations to monitor stream condition



and flow of hundreds of miles of stream located above their underground long-wall mining operations. The goal of the project is to monitor and predict potential physical and/or biological variations to surface waters pre and post mining. Immediate needs to implement this project necessitated a very tight schedule to obtain sound and practical solutions in a timely manner. WPI's engineers and biologists, along with WPI's and the mines' GIS departments and management, worked closely to develop an effective data collection and management system.

The ability to have almost instantaneous access to data provided the client with the

ability to foresee problems before they arise (change detection), have current geo-spatial data in hand to answer complex questions, and visually assess environmental concerns and state/federal permitting issues in almost real time. The development and implementation of this methodology has enabled the client to provide a quick response to environmental concerns.

Mr. Mihalik presented a power point presentation detailing the methodology, tools and equipment, and processes used to implement this project. He also detailed how this implementation provides benefits to both the client and ultimately to the environment.

Mr. Mihalik will also be presenting at the 2010 GIS West Virginia Conference, June 7 - 10, 2010.

Visit <http://wvagnp.org/conference/2010/registration.asp> for more conference information.

fresh faces



BRAD BURFORD - Environmental Scientist.

Fun Fact: I can call 4 species of owl with my voice and whistling.



JOE HIRSCHMANN - Construction Manager

Fun Fact: According to my wife, my best attribute is my comic relief



KIM VAUGHN - GIS Analyst

Fun Fact: I am very accident prone and have a ridiculous number of broken bones



CHRIS WAGNER - Assistant Project Manager

Fun Fact: My left thumb dislocates at will & can point backwards (old football injury)



1085 S, Hermitage Road
Hermitage, PA 16148

MACROINVERTEBRATE LABORATORY NEWS

WPI Judges Ionta Elementary Invention Convention

Josh Kelly, Asst. Environmental Scientist and Lori Zikovich, Lab Technical for WPI, were judges for the 21st annual Ionta Elementary Invention Convention.



There were 71 inventions entered in the competition.

Where's My Line, a place marker to hold your spot on a page, invented by 4th grader Jared Rudge, won 1st prize. *The Ultimate Snowball Maker*, an invention to make snowballs, took 2nd place. And a tie for 3rd place was between *The Smash-M-Trash* and *Auto Rage*.

If you are interested in having a program brought to your school, please call Jennifer Barborak, Laboratory Administrator (724) 981-0155.

WPI Tid Bits

The WPI Family just keeps growing... Congratulations to John Burglund, Senior Project Manager and his wife Mary Jo, they expecting their fourth child in September!

WPI is happy to announce the addition of a compost bin at our Hermitage office. The bin was compliments of the Mercer County Conservation District. Thanks for helping us to "Green" our office!

Jeff Mihalik, GIS Manager will be presenting at the 2010 GIS West Virginia Conference, June 7 - 10, 2010.

Visit <http://wvagp.org/conference/2010/registration.asp> for more conference information

STATE & FEDERAL OFFICIALS VISIT WPI



Dan Wallace, P.E. talks about WPI's exemplifying grown with Congresswoman, Kathy Dahlkemper who made a visit to WPI, February 1, 2010.

U.S. Assistant Secretary for Commerce and Development, John Fernandez and Senator Bob Robbins Attend WPI Open House April 28, 2010

